



The next level of
deliverability



Ultrathin struts



Outstanding patient
outcomes



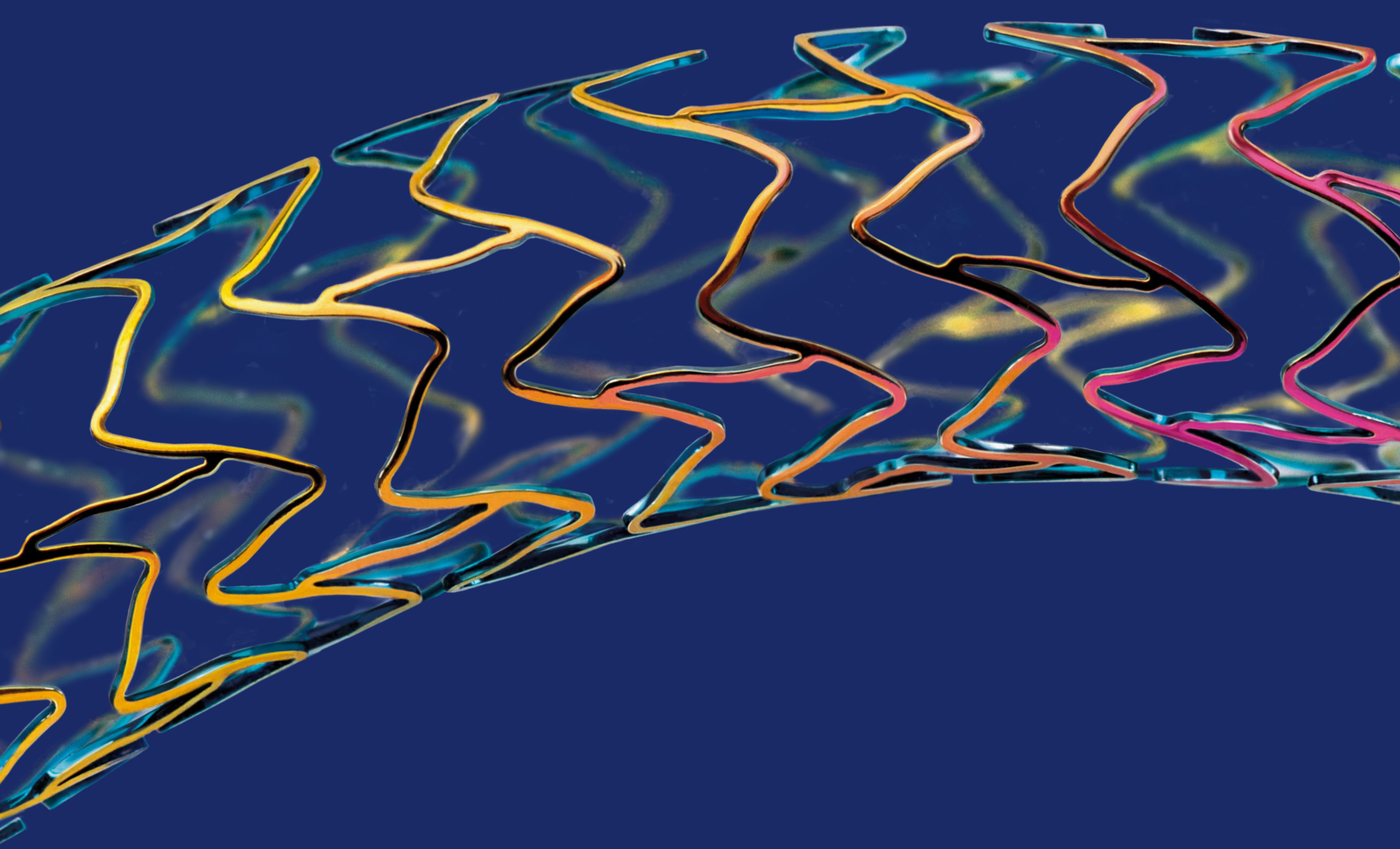
Technical data /
ordering info

TeleflexTM
Empowering the future of healthcare

OrsiroTM MissionTM

Drug-Eluting Stent (DES)

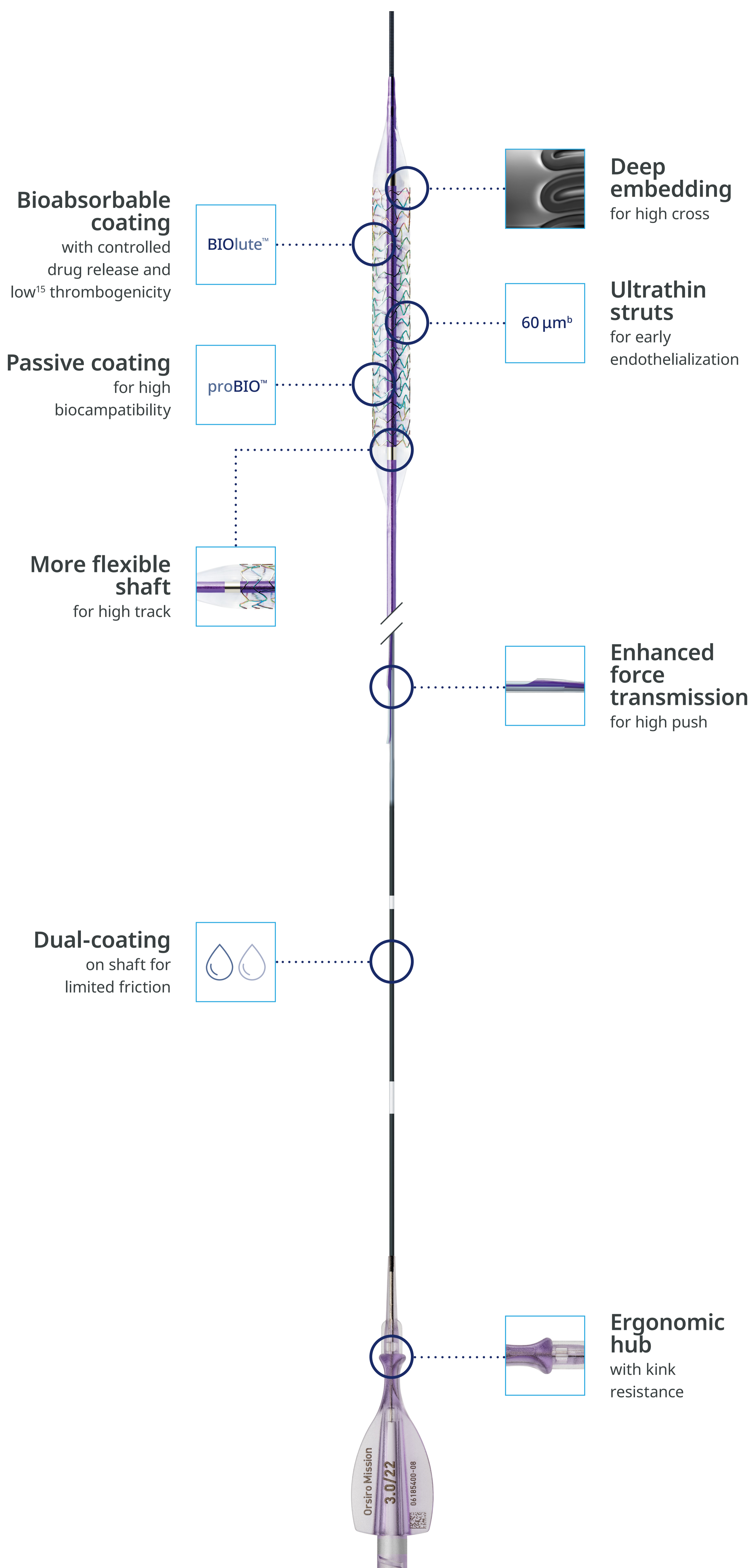
Delivering superiority^{1,a}



Orsiro™ Mission™ DES

Delivering superiority^{1,a}

The Orsiro™ Mission™ Sirolimus-Eluting Coronary Stent System is a drug-eluting balloon-expandable stent pre-mounted on a rapid-exchange PTCA catheter delivery system.

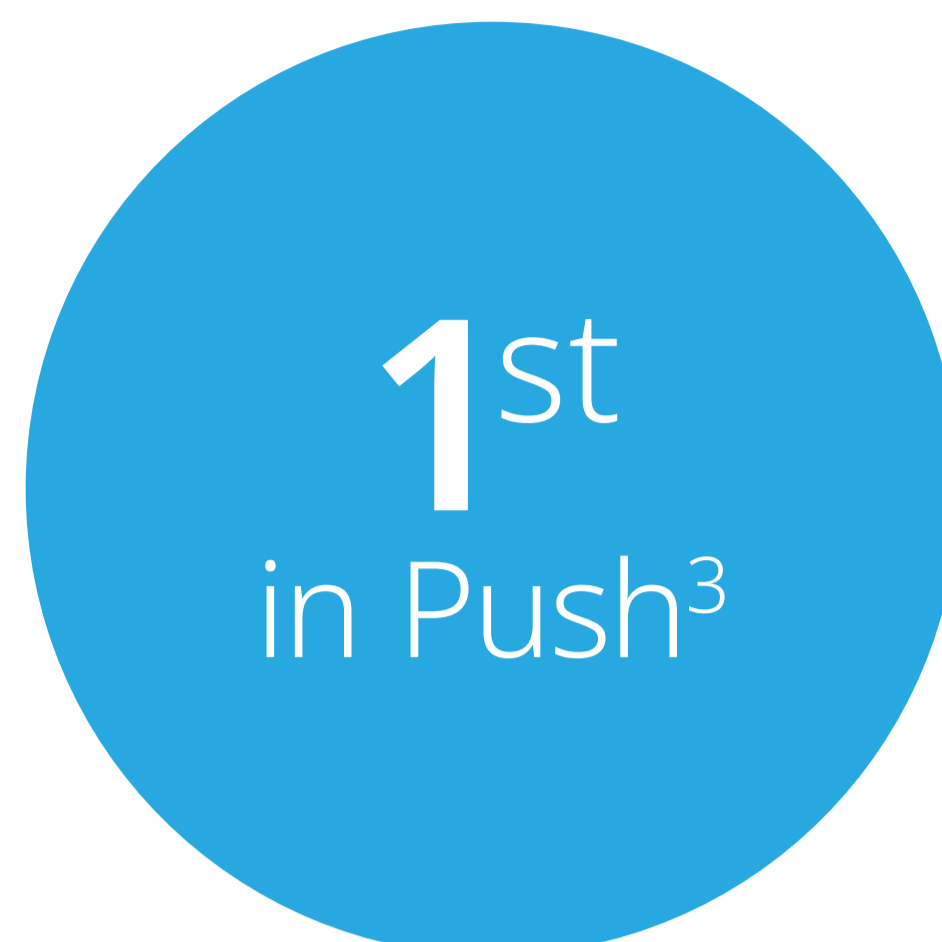
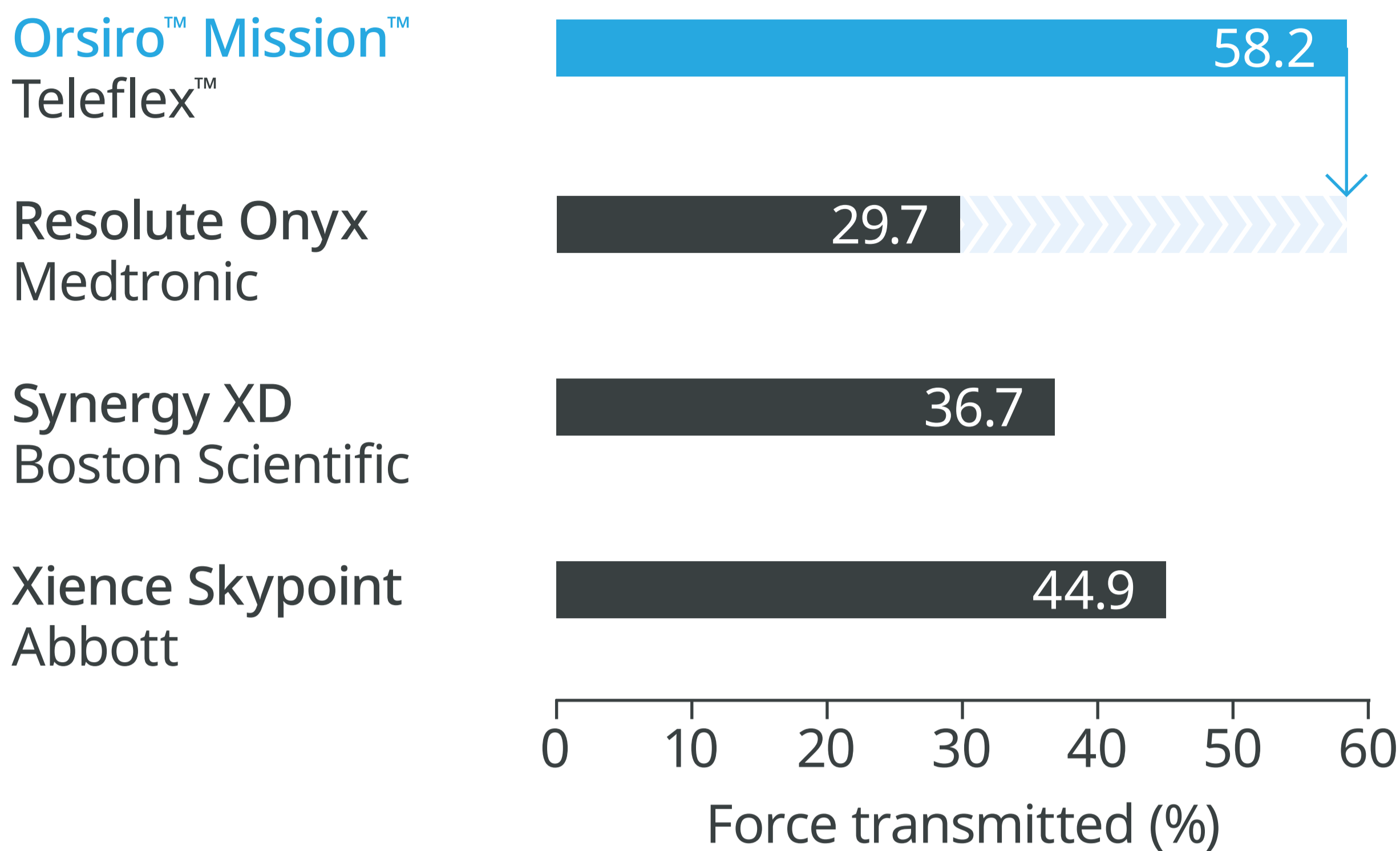




The next level of deliverability²

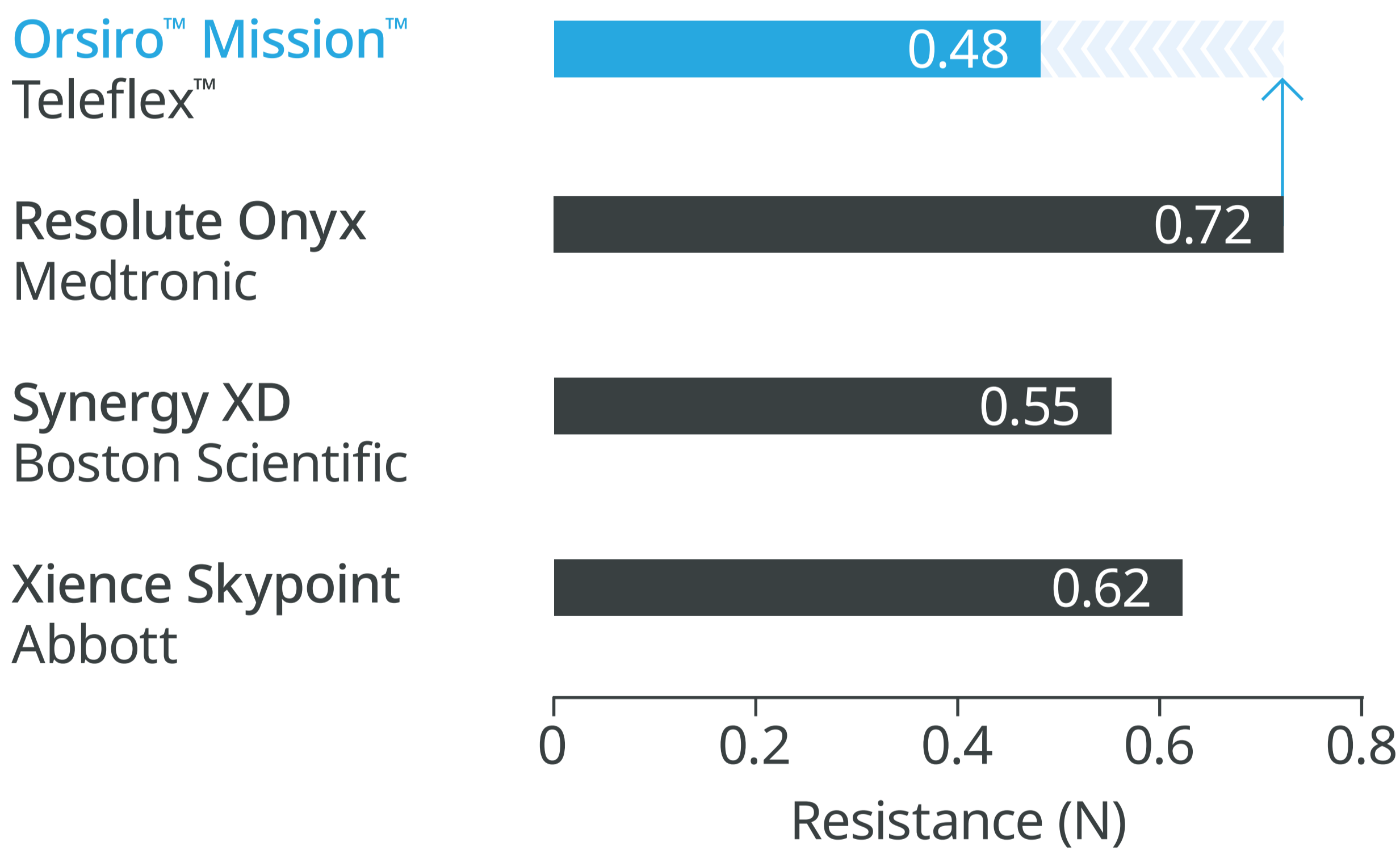
Better pushability³

Transmitting up to **96 % more force** from hub to tip.



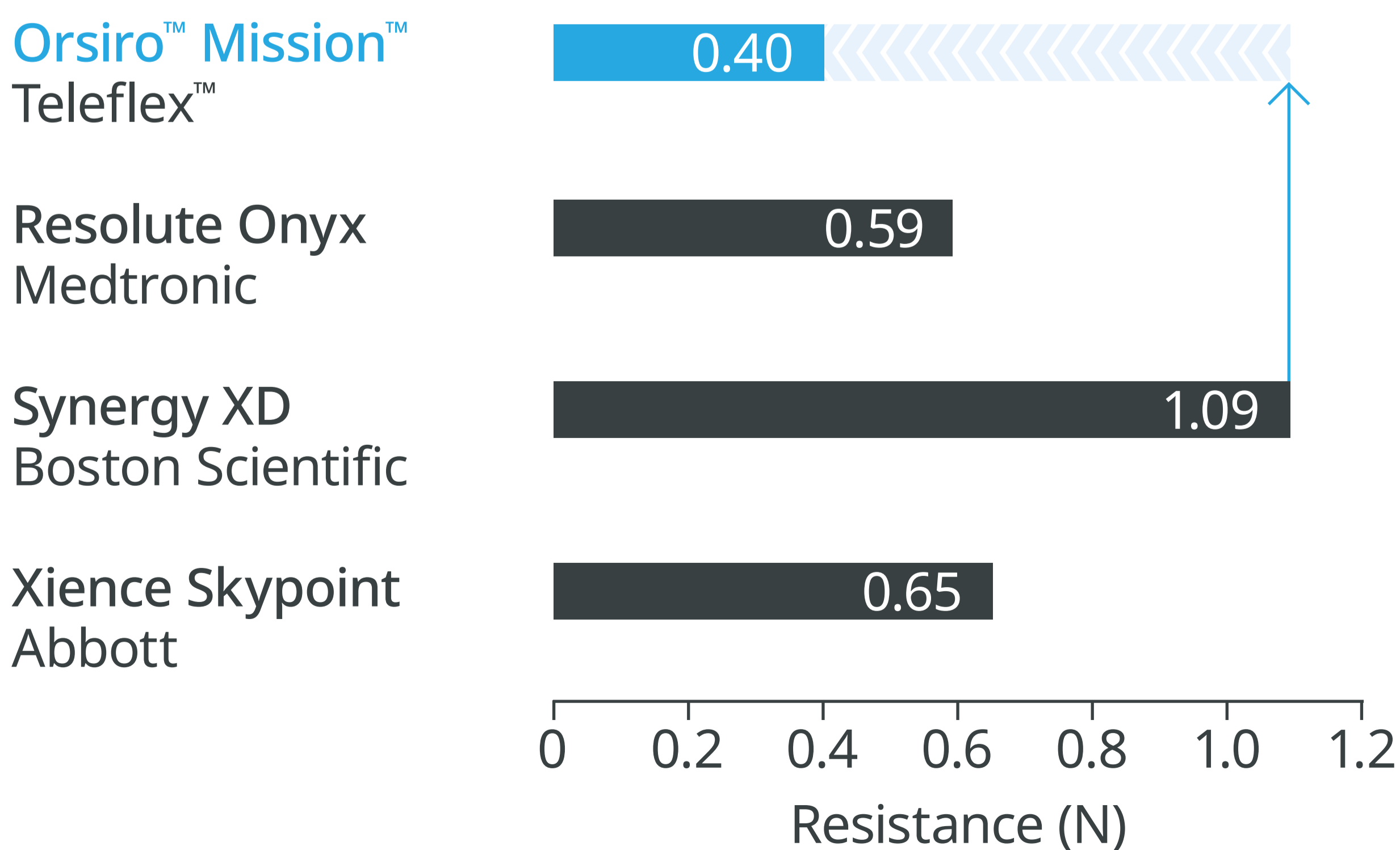
Better trackability³

Up to **33 % less force** needed to follow the path to the lesion.



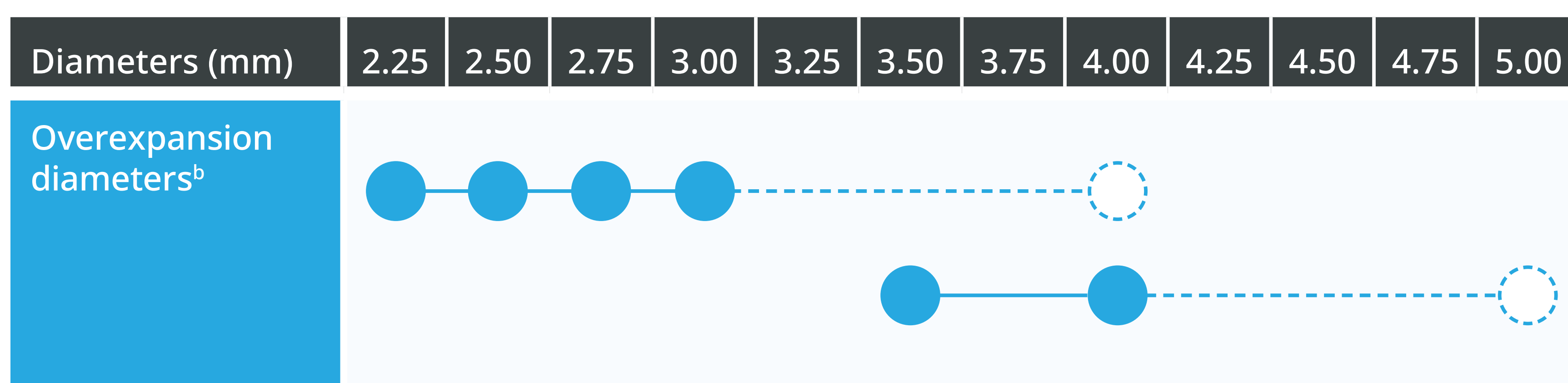
Better crossability³

Up to **64 % less force** needed to successfully cross demanding anatomies.



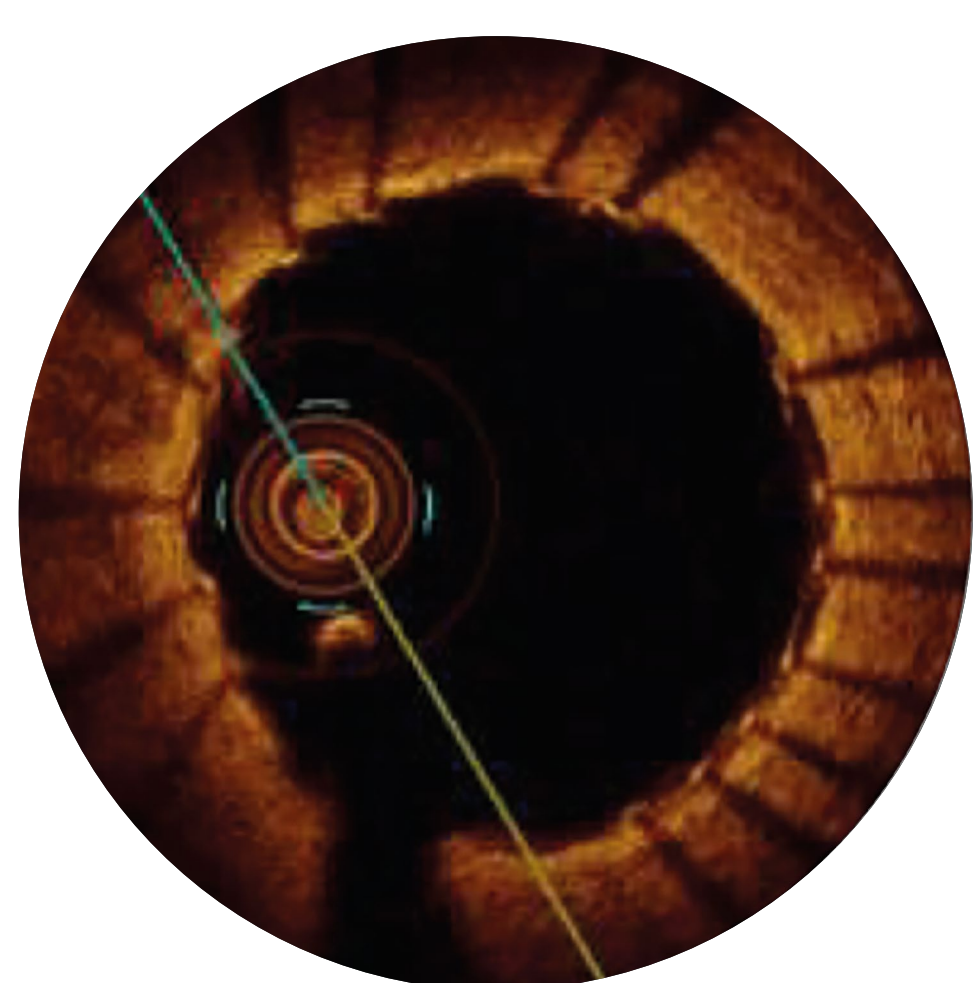
Ultrathin struts⁷

Conforming to a wider range of vessels^{8,c}



● Labeled nominal diameter ○ Labeled max. diameter for post-dilatation

Early endothelialization

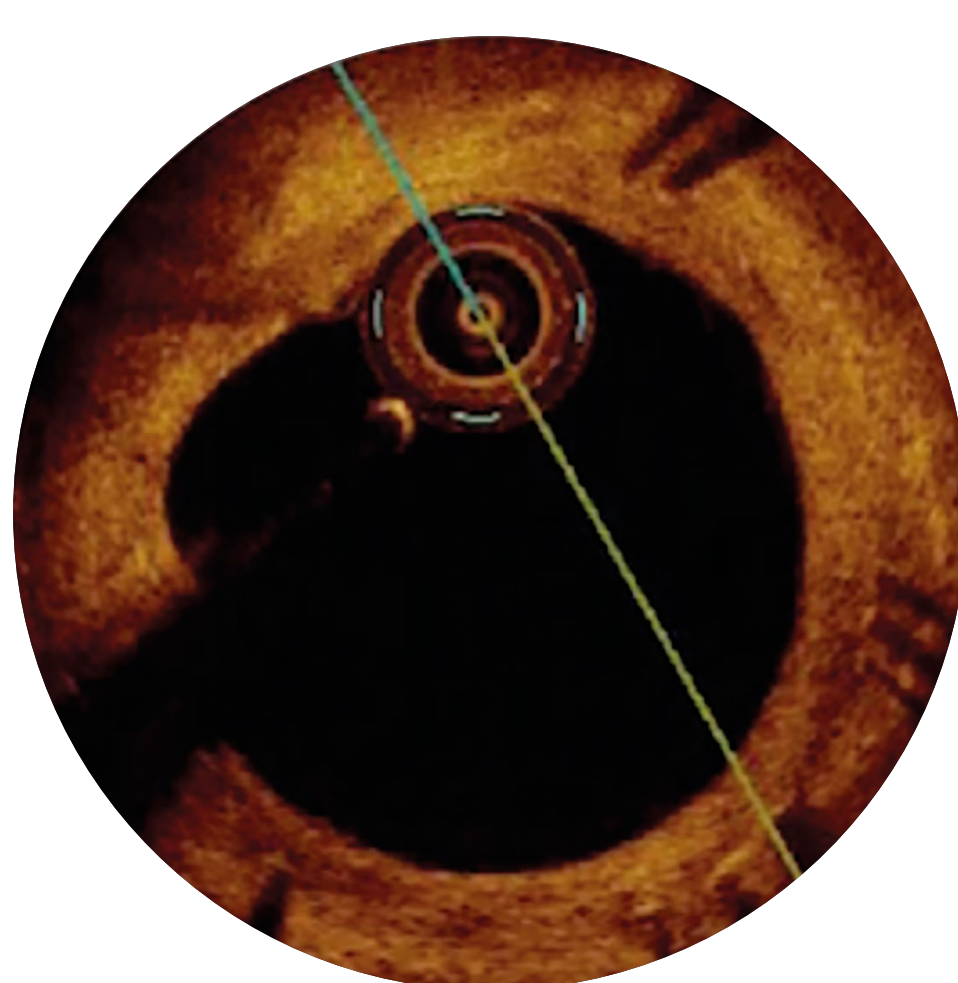


Strut coverage⁹

30 days^d

>80 %

n = 589

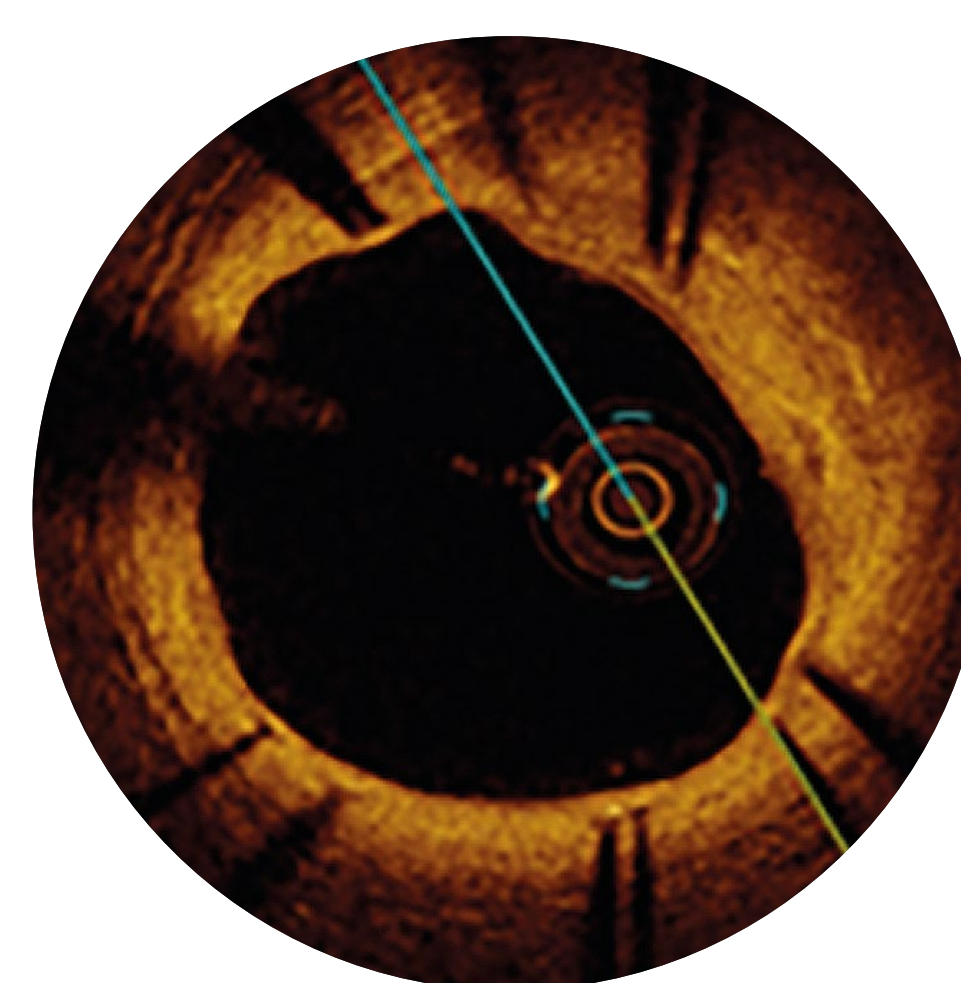


Strut coverage⁹

90 days^d

>97 %

n = 874



Strut coverage⁹

180 days^d

>98 %

n = 1,130

Immature tissue coverage



HEALING
PROGRESS



Tissue maturation
and full coverage

Strut thickness in perspective⁴

Orsiro[™] Mission[™]
Teleflex[™]
CoCr-SES



60 μm^b

Synergy XD
Boston Scientific
PtCr-EES



74 μm

Ultimaster
Terumo
CoCr-SES



80 μm

Resolute Onyx^{5,6}
Medtronic
CoNi-ZES



81 μm

Xience Family
Abbott
CoCr-EES



81 μm

Promus
Boston Scientific
PtCr-EES



81 μm

BioMatrix
Biosensors
316L-BES



120 μm

n = number of struts analyzed. TLF = target lesion failure.

a. Data on file (n = 5), based on statistically significant differences on the bench for Pushability, Trackability, and Crossability compared to Xience Skypoint, superior to Xience in STEMI patients; b. ø 2.25–3.0 mm strut thickness 60 μm, ø 3.5–4.0 mm strut thickness 80 μm; c. Always refer to the Instruction for Use (IFU) for the maximum diameter for post-dilatation applying in your country; d. Images: Secco G et al. Time-related changes in neointimal tissue coverage following a new generation SES implantation: an OCT observational study. Presented at: EuroPCR, May 20, 2014; Paris, France; e. Clinical data collected with the Orsiro DES device within the Orsiro DES family clinical program; f. Clinical data collected with the Orsiro Mission DES device within the Orsiro DES family clinical program; g. At 5-year in STEMI patients; h. As per IFU: ACS – Acute Coronary Syndrome; B2/C – Complex Lesions; DAPT – Dual Antiplatelet Therapy; DM – Diabetes Mellitus; HBR – High Bleeding Risk; MVD – Multi-Vessel Disease; STEMI – ST-Elevation Myocardial Infarction; SV – Small Vessels; i. Compared to Xience, up to 5 years. Orsiro DES: 7.7 %, Xience DES: 11.1 %, BIOSTEMI with historical information RR, 0.70; 95 % BCI, 0.51–0.95, Bayesian posterior probability, 0.988; j. Please refer to the IFU for indications and post-procedure antiplatelet therapy recommendations.

Outstanding patient outcomes^{10,e}

Orsiro™ family of DES – One of the most studied DES^{11,e,f}

>100,000

patients enrolled or planned in total^{12,e,f}

>71,000

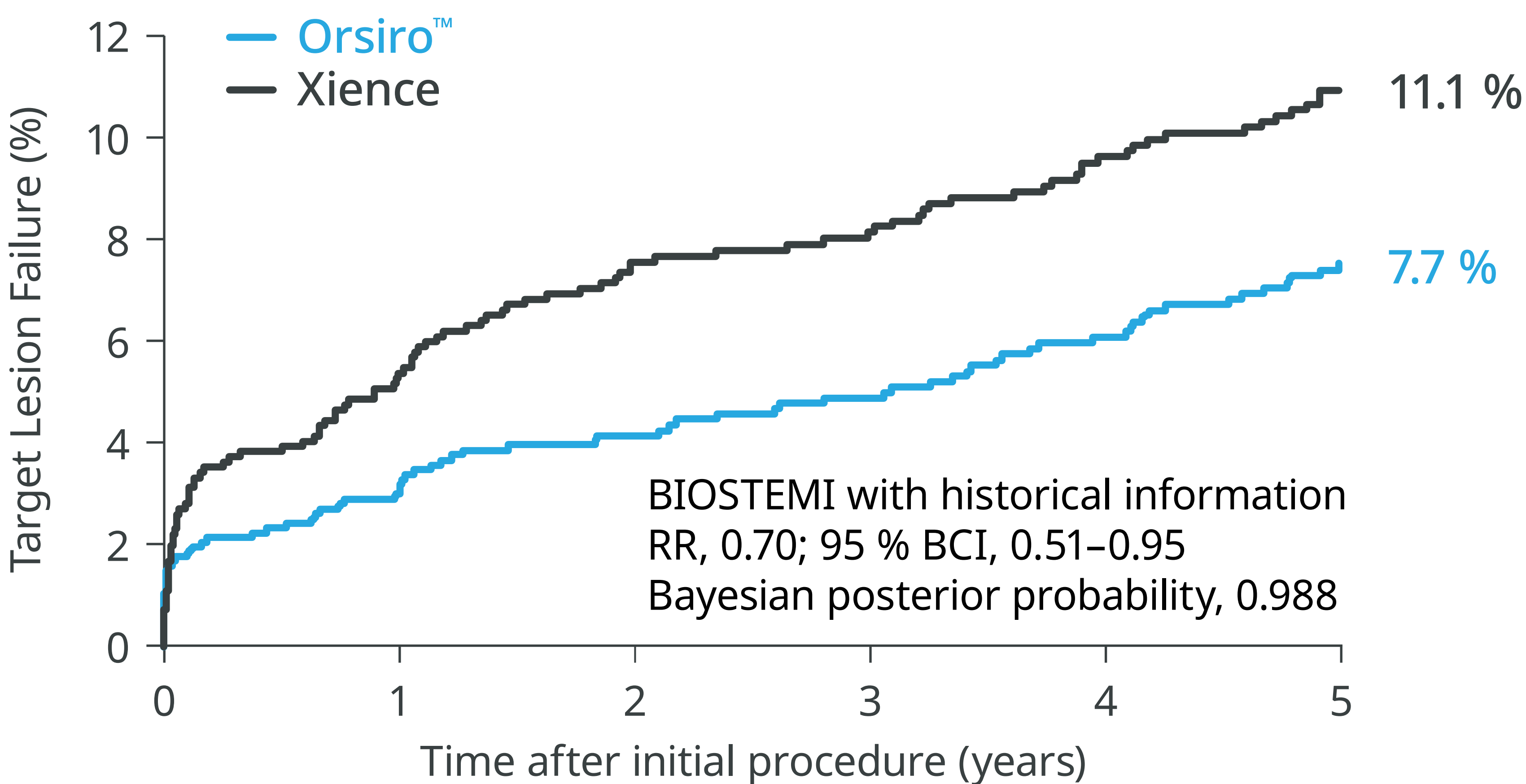
patients enrolled^{12,e,f}

>86

studies started^{12,e,f}

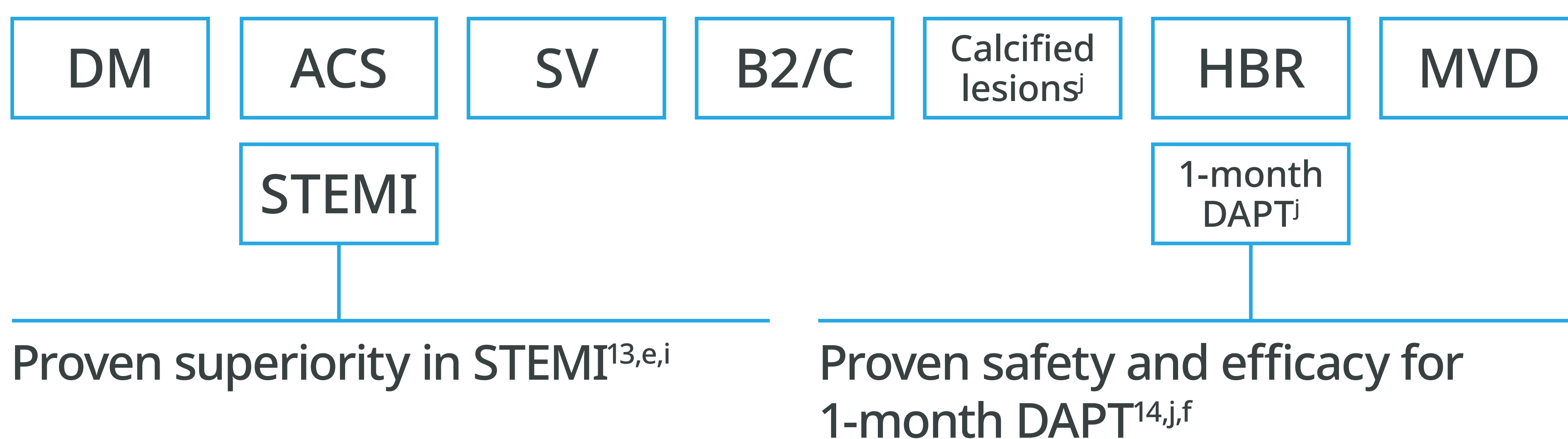
BIOSTEMI

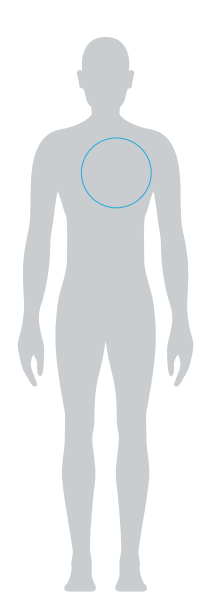
TLF at 5 years – continued superiority in STEMI^{13,e}



31 %
significantly
lower TLF^{13,e,g}

Orsiro™ Mission™ DES is indicated for complex patients and lesions^h





Indication

Orsiro™ Mission™ DES is indicated for improving coronary luminal diameter in patients with symptomatic ischemic heart disease due to discrete de-novo stenotic lesions and in-stent restenotic lesions (length ≤40 mm) in the native coronary arteries with a reference vessel diameter of 2.25 mm to 4.0 mm including the following patient and lesion subsets:

<ul style="list-style-type: none"> Acute Coronary Syndrome (ACS) ST-Elevation Myocardial Infarction (STEMI) Diabetes Mellitus (DM) High Bleeding Risk (HBR) One month of Dual Antiplatelet Therapy (DAPT) in HBR patients Calcified lesions (moderate/severe calcification) 	<ul style="list-style-type: none"> Complex Lesions (B2/C) Long Lesions (LL) (e.g. ≥20 mm) Small Vessels (SV) (e.g. ≤2.75 mm) Multi-Vessel Disease (MVD) Male/Female Old Patients (e.g. >65 y)
---	--

Technical Data

STENT	
Stent material	Cobalt chromium, L-605
Strut thickness	∅ 2.25–3.0 mm: 60 µm (0.0024"); ∅ 3.50–4.0 mm: 80 µm (0.0031")
Passive coating	proBIO™ (Amorphous Silicon Carbide)
Active coating	BIOlute™ bioabsorbable Poly-L-Lactide (PLLA) eluting a limus drug
Drug dose	1.4 µg/mm ²

Delivery System

DELIVERY SYSTEM	
Catheter type	Rapid exchange
Recommended guide catheter	5F (min. I.D. 0.056")
Guide wire diameter	0.014"
Usable catheter length	140 cm
Balloon material	Semi crystalline polymer
Coating (Distal shaft)	Hydrophilic
Coating (Proximal shaft)	Hydrophobic
Marker bands	Two swaged platinum-iridium markers
Lesion entry profile	0.017"
Distal shaft diameter	2.7F: ∅ 2.25–3.0 mm; 2.9F: ∅ 3.5–4.0 mm
Proximal shaft diameter	2.0F
Nominal pressure (NP)	10 atm
Rated burst pressure (RBP)	16 atm

Ordering Information

SCAFFOLD Ø	SCAFFOLD LENGTH				
	9 mm	13 mm	15 mm	18 mm	22 mm
2.25 mm	419101	419107	419113	419119	419125
2.50 mm	419102	419108	419114	419120	419126
2.75 mm	419103	419109	419115	419121	419127
3.00 mm	419104	419110	419116	419122	419128
3.50 mm	419105	419111	419117	419123	419129
4.00 mm	419106	419112	419118	419124	419130

SCAFFOLD Ø	SCAFFOLD LENGTH			
	26 mm	30 mm	35 mm	40 mm
2.25 mm	419131	419137	419143	419149
2.50 mm	419132	419138	419144	419150
2.75 mm	419133	419139	419145	419151
3.00 mm	419134	419140	419146	419152
3.50 mm	419135	419141	419147	419153
4.00 mm	419136	419142	419148	419154

References:

- Iglesias JF, et al. Long-term outcomes with biodegradable polymer sirolimus eluting stents versus durable polymer everolimus-eluting stents in ST-segment elevation myocardial infarction: 5-year follow-up of the BIOSTEMI randomized superiority trial, *The Lancet*, 2024.
- In comparison to Xience Sierra, Resolute Onyx and Synergy for bench tests on pushability, trackability and crossability, data on file.
- In comparison to Resolute Onyx, Xience Sierra and Synergy, data on file.
- Stefanini GG et al. Coronary stents: novel developments. *Heart*. 2014 Jul 1;100 (13):1051-61.
- Low AF. Stent plat-form for procedural success: Introducing the Continuous Sinusoidal & Core Wire Technologies. Presented at: AsiaPCR; 22-24 January, 2015; Singapore, Singapore.
- Tolentino A. Evolving DES Strategy: Biodegradable Polymer vs. Bioabsorbable Scaffold. Presented at: Cardiovascular Nurse/Technologist Symposium; June 17, 2016; New York, USA.
- As characterized with respect to strut thickness in Bangalore et al. Meta-analysis.
- Kapoor A. et al., The road to the ideal stent: A review of stent design optimization methods, findings, and opportunities, *Materials&Design*, 2024.
- Secco G. et al. Time-re-lated changes in neointimal tissue coverage of a novel Sirolimus eluting stent: Serial observations with optical coherence tomography. *Cardiovascular Revascularization Medicine* 17.1 (2016): 38-43.
- Based on investigator's interpretation of BIOFLOW-V primary endpoint result.
- In large RCTs based on Taglieri et al. Meta-analysis, against currently used DES.
- Including Orsiro DES and Orsiro Mission DES, data on file, as of February 2023.
- Based on TLF primary endpoint. Iglesias, JF, et al. Long-term outcomes with biodegradable polymer sirolimus-eluting stent versus durable polymer everolimus-eluting stents in ST-segment elevation myocardial infarction: 5-year follow-up of the BIOSTEMI randomized superiority trial, presented at TCT 2023.
- Based on primary and secondary outcomes, Valgimigli M. et al BIOFLOW DAPT *Circulation* 2023.
- Per investigators' interpretation of pre-clinical studies with Orsiro as mentioned in Cassese et al. *J Thorac Dis* 2018;10 (02):688-692.

Teleflex, the Teleflex logo, BIOlute, Orsiro, Orsiro Mission, and proBIO are trademarks or registered trademarks of Teleflex Incorporated or its affiliates in the U.S. and/or other countries. All other names are the trademarks or registered trademarks of their respective owners.

© 2025 Teleflex Incorporated. All rights reserved.

446240-EN · REV H · 09 25 PDF · DV

Distributed by:

Teleflex Headquarters International, Ireland · Teleflex Medical Europe Ltd. · IDA Business & Technology Park
Dublin Road · Athlone · Co Westmeath · Tel. +353 (0)9 06 46 08 00 · Fax +353 (0)14 37 07 73 · orders.intl@teleflex.com
United Kingdom · Tel. +44 (0)14 94 53 27 61 · info.uk@teleflex.com
South Africa · Tel. +27 (0)11 807 4887 · assist.africa@teleflex.com

teleflex.com

Teleflex™
Empowering the future of healthcare